

# Lytton & Region Economic Recovery Plan

**Survey & Key Stakeholder Summary**

# SURVEY OVERVIEW

## Lytton & Region Economic Recovery Survey Overview

- Open from Feb 9 – March 1

119

Total Responses

31

Business Owners

# STAKEHOLDER ENGAGEMENT OVERVIEW

52

Hours of community  
engagement

26

Stakeholder  
Interviews

9

Business owners

13

Organizations & Residents

4

Elected Officials

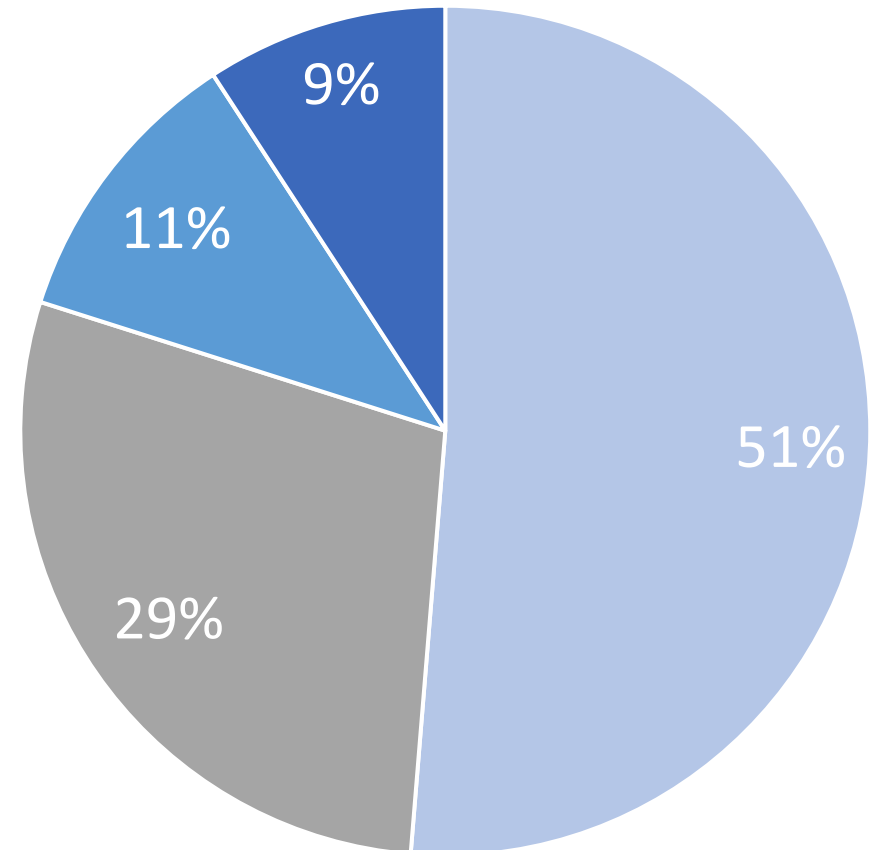
# Survey Overview

Which area would you say you are from?

Village of  
*Lytton*

- Within the Village of Lytton (Municipality)
- In the region surrounding the Village of Lytton (TNRD)
- Other
- Tl'Kemstin First Nation (Lytton First Nation) Reserve

Total Responses: **119**





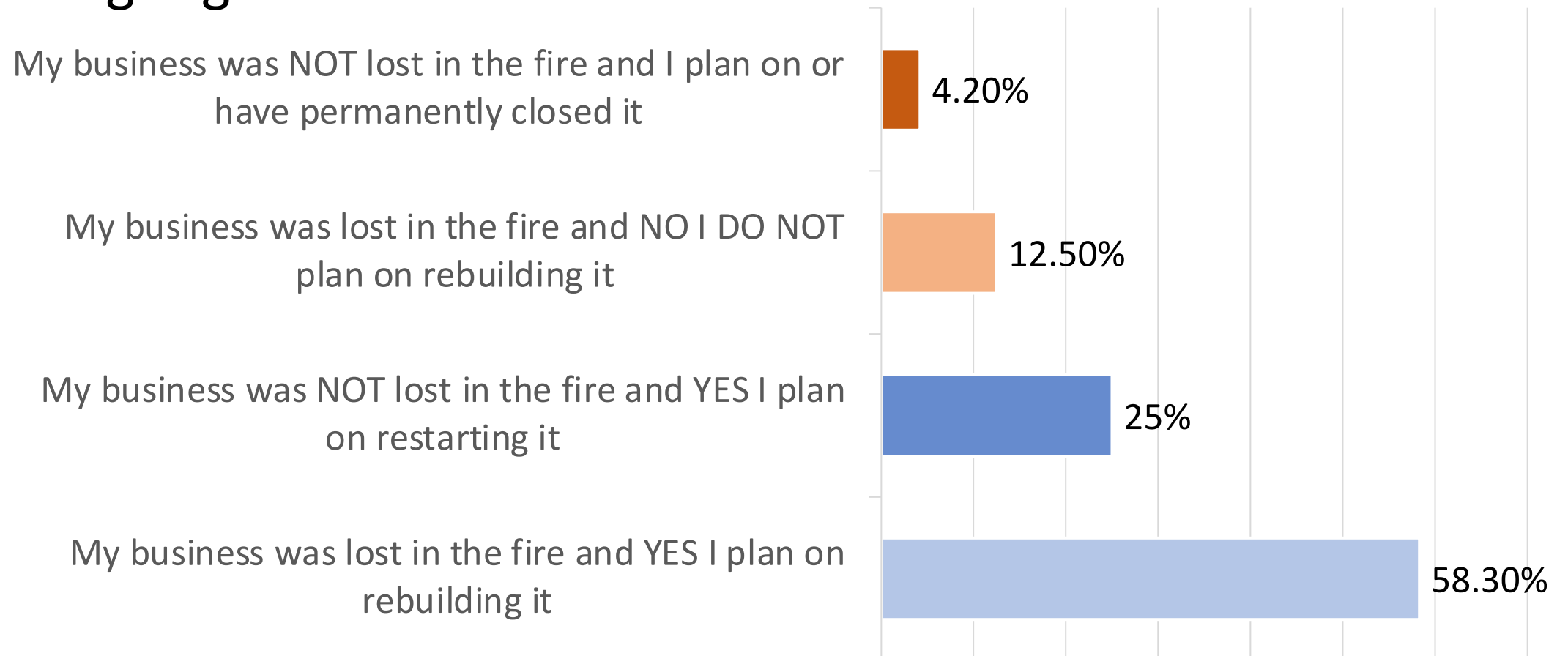
---

| Lytton & Region Responses     |        |
|-------------------------------|--------|
| Number of survey participants | 119    |
| Total Population in Region    | 2,369  |
| Percentage of participation   | 5.023% |
| Statistical Significance      |        |
| Confidence Level              | 98%    |
| Margin of error:              | 10.46% |

---

# Business Community Insights

Do you plan on rebuilding or restarting your business in Lytton or surrounding region?



How much  
financial loss did  
your business  
experience in the  
summer of 2021  
due directly to  
wildfires (dollar  
amount)?

Business  
Community  
Insights

**Equipment = \$3,052,500 (Total)**  
\$203,500 (Average)

**Buildings = \$16,316,030 (Total)**  
\$1,255,079.23 (Average)

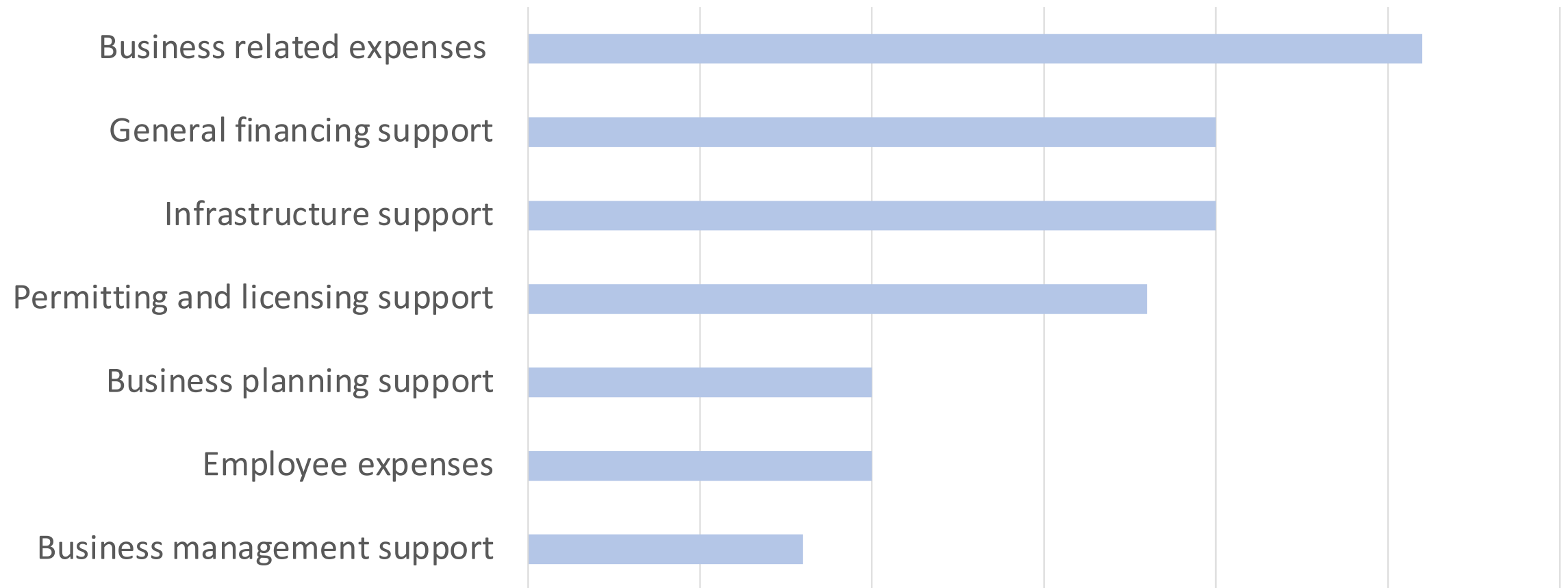
**Lost Sales = \$6,687,500 (Total)**  
\$477,678.57 (Average)

**Inventory = \$1,890,000**  
\$132,333.33 (Average)

**Businesses estimated at least \$27,946,030  
financial loss in 2021 due directly to wildfires.**  
\$7,010,258 (Average)

# Business Community Insights

In order of most important to least important where could your business use the most support?





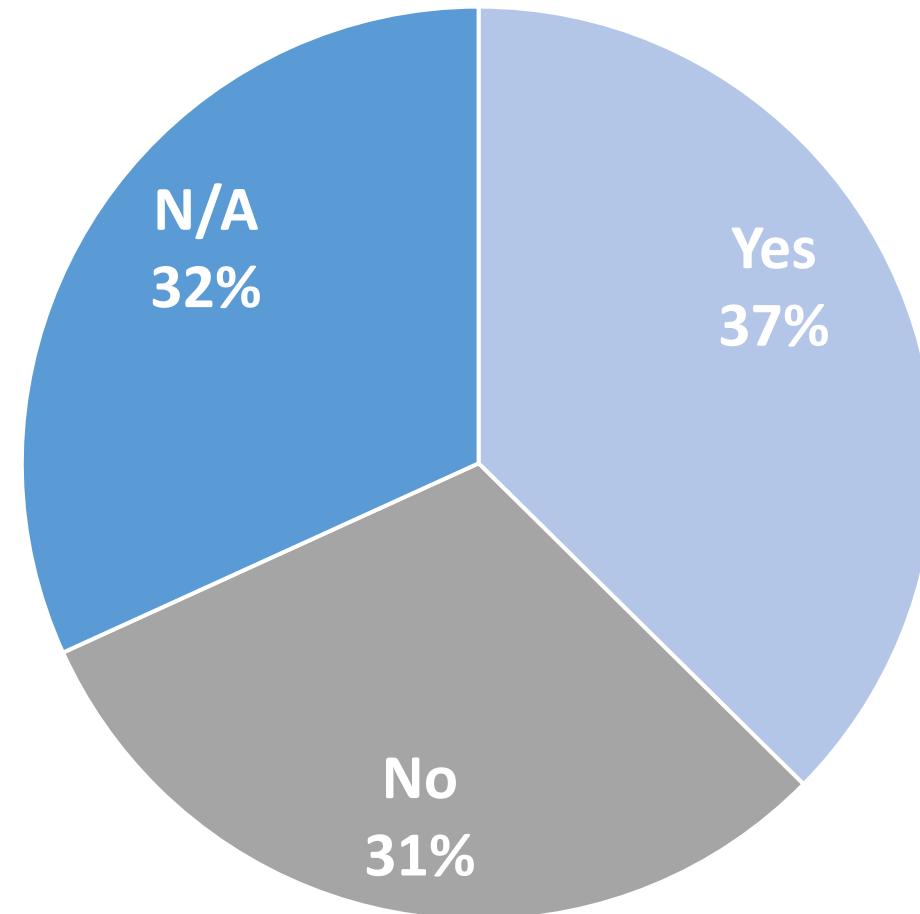
# What gaps exist for recovery for business owners affected by the wildfire in Lytton and region?





# Community Insights

Did you have insurance to cover any of the losses you incurred due to the 2021 wildfire?



If you were under insured OR if you did not have insurance, how much MORE money do you need to rebuild ?

Community  
Insights

## **Business Rebuild**

Shortfall = \$14,569,030 (Total)

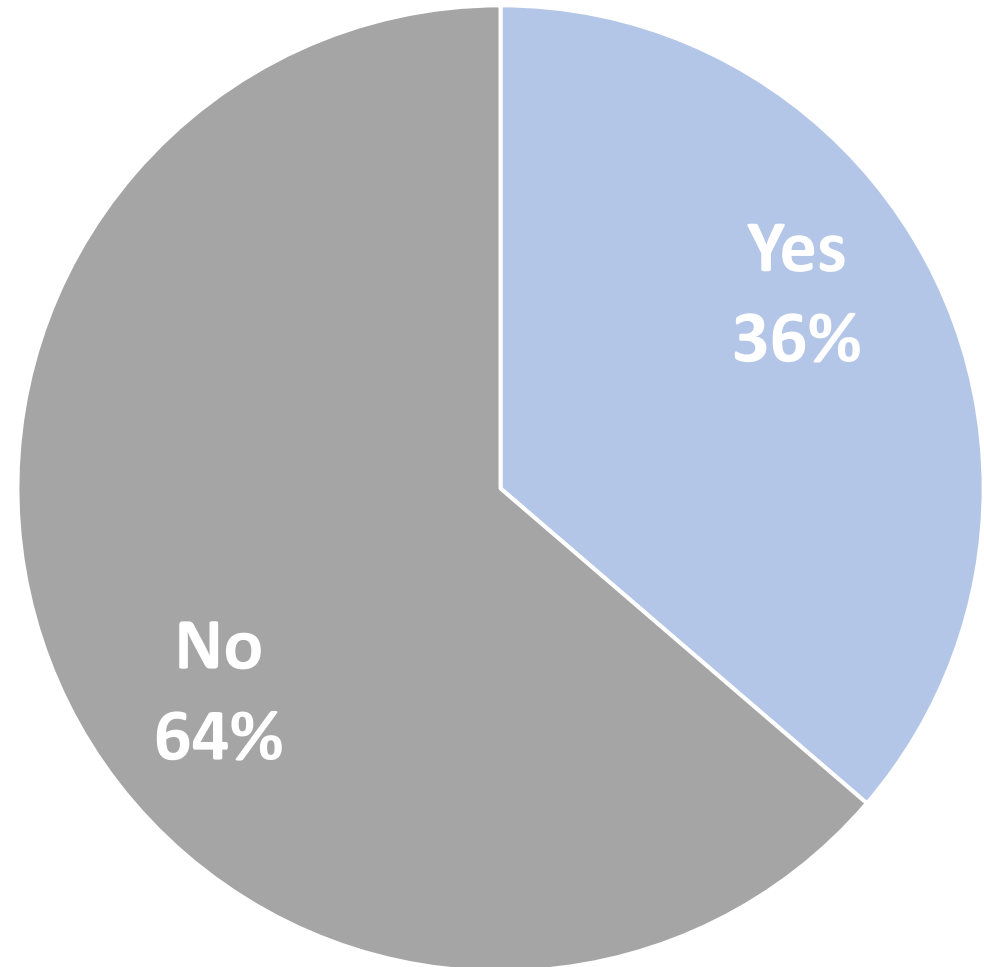
## **Home Rebuild**

Shortfall = \$6,990,000 (Total)

\$365,000.00 (Average)

# Community Insights

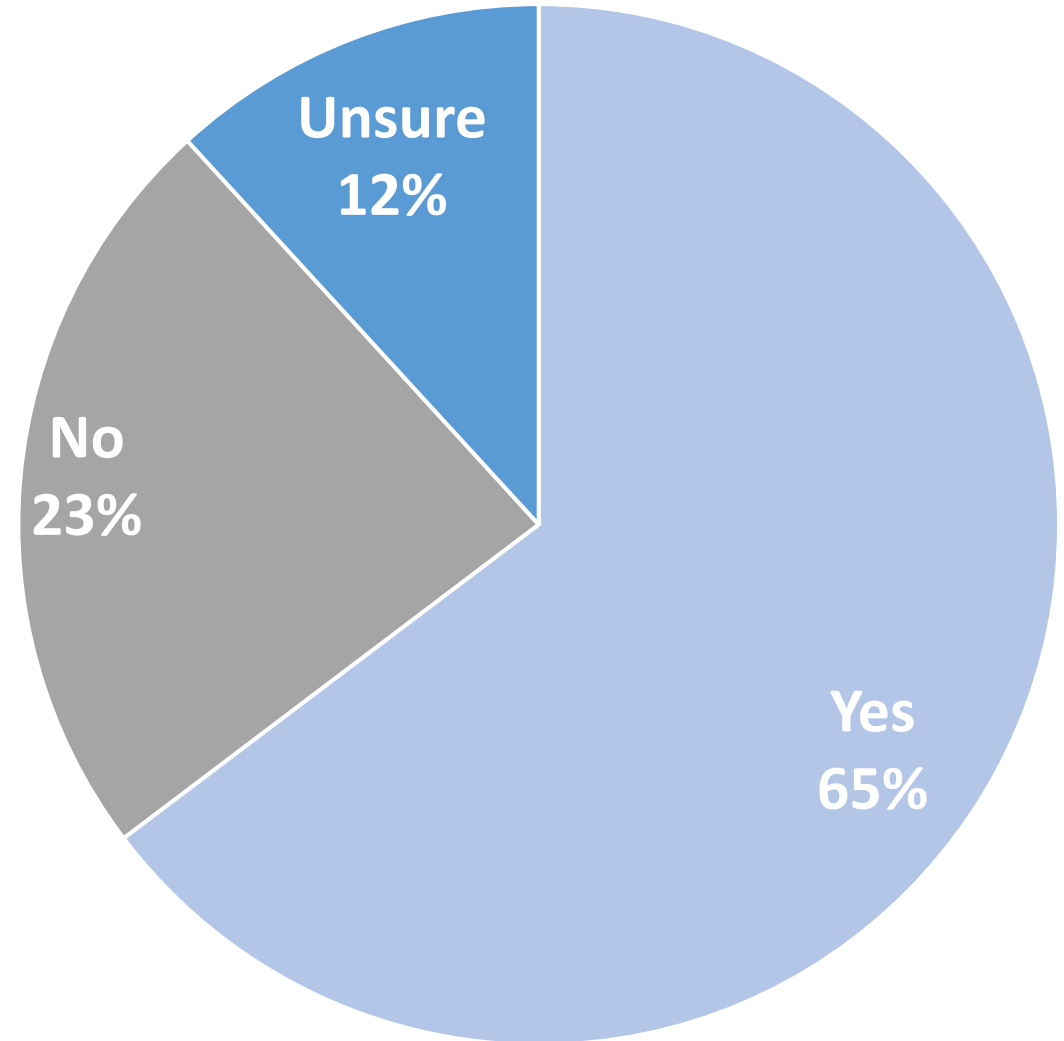
Have you relocated after the 2021 wildfire?





# Community Insights

Do you plan to  
rebuild/move back to Lytton  
or region in the future?



# Community Insights

If you do not plan to, or you are unsure if you will rebuild/move back to Lytton or region. Please explain why.

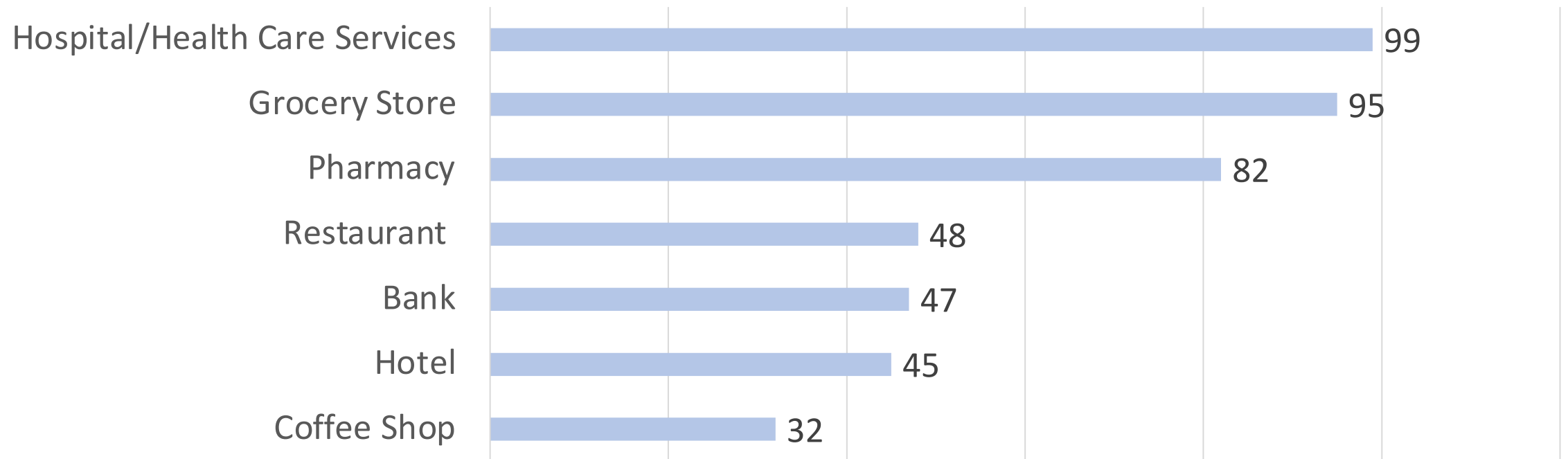
*“It has taken too long. We needed stability in our lives, so we settled in a new community.”*

*“Depends on financial support for rebuilding”*

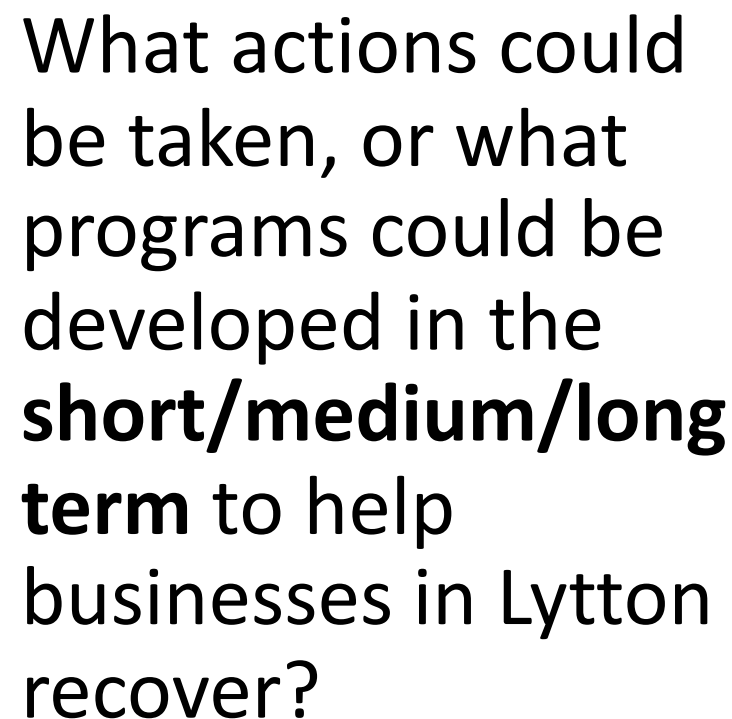
*“We would like to move back to Lytton, however, this would all depend if there are any home and business financial rebuilding support.”*

*“If no home and business rebuild support, most people including myself will not be moving back.”*

## Rank in priority amenities/businesses that need to re-open in Lytton:









Do you have any other information or comments that could assist us with our economic analysis and recovery plan moving forward?



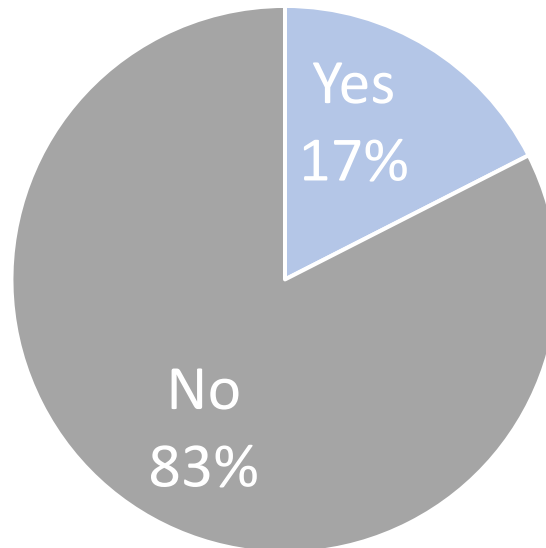
# Key Themes



# Key Themes

## Mental Health Support

Do you feel that mental health resources are available in the community to meet the needs of those who need support?



# Key Themes

## Communication & Collaboration

*“People in groups not working together effectively. We are stronger together and it doesn’t make sense not to work together.”*

*“Announcements made with little information to guide direction (ex. Funding announced yet no clarity on who it will support or how it will work).”*

*“The Village must build strong working relationships with the First Nations in the area and strengthen their relationships with regional, provincial and federal governments.”*

*“Need in person communication opportunities for residents (e.g. coffee shop)”*

# Key Themes

## Financing & Funding

*“Without home and business rebuild support, most people including myself will not be moving back.”*

*“We need funding envelopes to assist the under/non-insured during the rebuild”*

*“Many business owners and homeowners still have to pay for loans/mortgages/rent but there is no business/home and no money coming in.”*



# Key Themes

## Insurance

*“We still don’t know if our insurance will be extended long enough to cover a rebuild. How long will the archeological process take?”*

*“Blanket negotiations with the insurance industry to extend our deadline.”*

*“Insurance money alone will not cover the rebuild costs.”*

*“Deadlines for insurance with no indication of when business/residents can start rebuilding.”*

# Key Themes

## Critical Infrastructure & Utilities

*“There is no sustainable water source (fire flow)”*

*“When will essential infrastructure be rebuilt? This is key to everything else.”*

*“There are a number of elements that need to be considered with location of Village so we are not in the same place 20 years from now.”*

# Key Themes

## Overwhelm & Uncertainty

*“It has taken too long. We needed stability in our lives, so we settled in a new community.”*

*“People are not sure if they will have the amenities and services they had before the fire, if they don’t have these why would they come back?”*

*“Lots of people are trying to help, but community is unclear on what they are doing. Lots of different messages, and periods where there is progress and then silence for months. Unsure of what is happening.”*

*“People need more information in order to make decisions.”*

# Key Themes

## Lack of Progress & Timeline

*“We need our residents back in order to keep healing. It's been hard for all of Lytton's people and it feels like a long, long time.”*

*“With the delays we are losing many community members. All the delays have caused many families to question if they should return. They are worried there will not be a community to return to.”*

*“Prioritize support for critical businesses and access to properties for owners”*



# Key Themes

## Opportunities

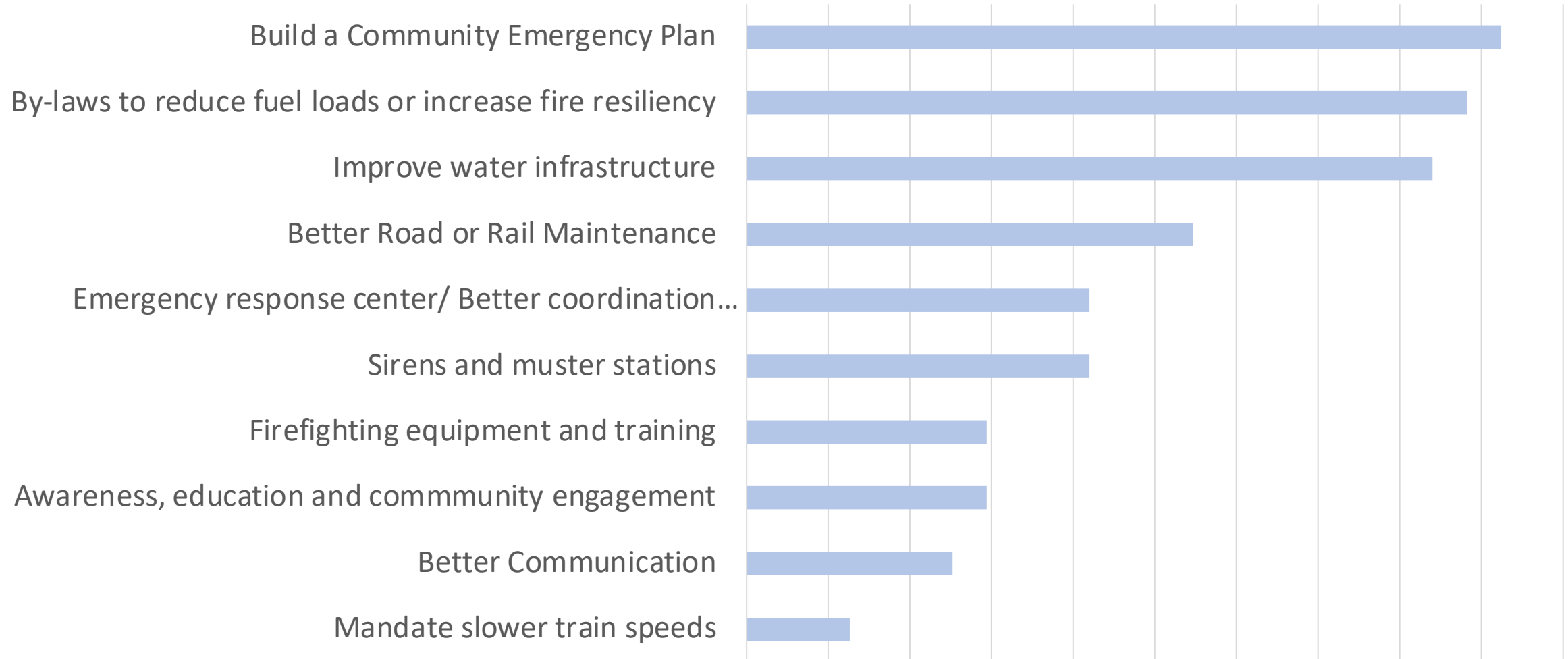
*“We have people that want to come back, businesses that want to come back, we just need the resources.”*

*“There is an opportunity with shared trauma. We can work together and rebuild with a larger sense of community (not defined by boundaries).”*

*“Rebrand community and honour history of culture.”*

*“Lytton has been capped and limited in the past because of housing shortages and older homes, this is changing because everything is being rebuilt.”*

# Future Economic Resilience



# Lytton & Region Economic Recovery Plan

## Next Steps:

Final Draft Report Delivered to Council for Approval - March 31

### Validation of Survey Findings

- Village of Lytton Community Meeting - Thursday, March 30 at 6:30 p.m.
- Validation Feedback open until April 12

Final Report Adoption by Council - April 12

# Survey Validation & Feedback

We want to hear from you:

- Do you agree with the information presented?
- Any other insights we should be aware of?
- Email: [Jamie@olearyandassociates.ca](mailto:Jamie@olearyandassociates.ca) with any concerns or insights

Questions?