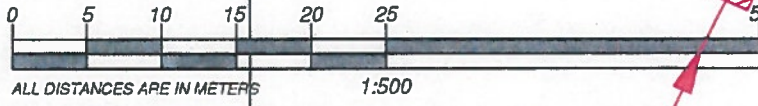


JOHN WARREN

PL. 7292

SITE PLAN OF LOT 1 OF THE NE 1/4, Sec 35, Tp 14, R 27, W6M, KDYD, EPP83488

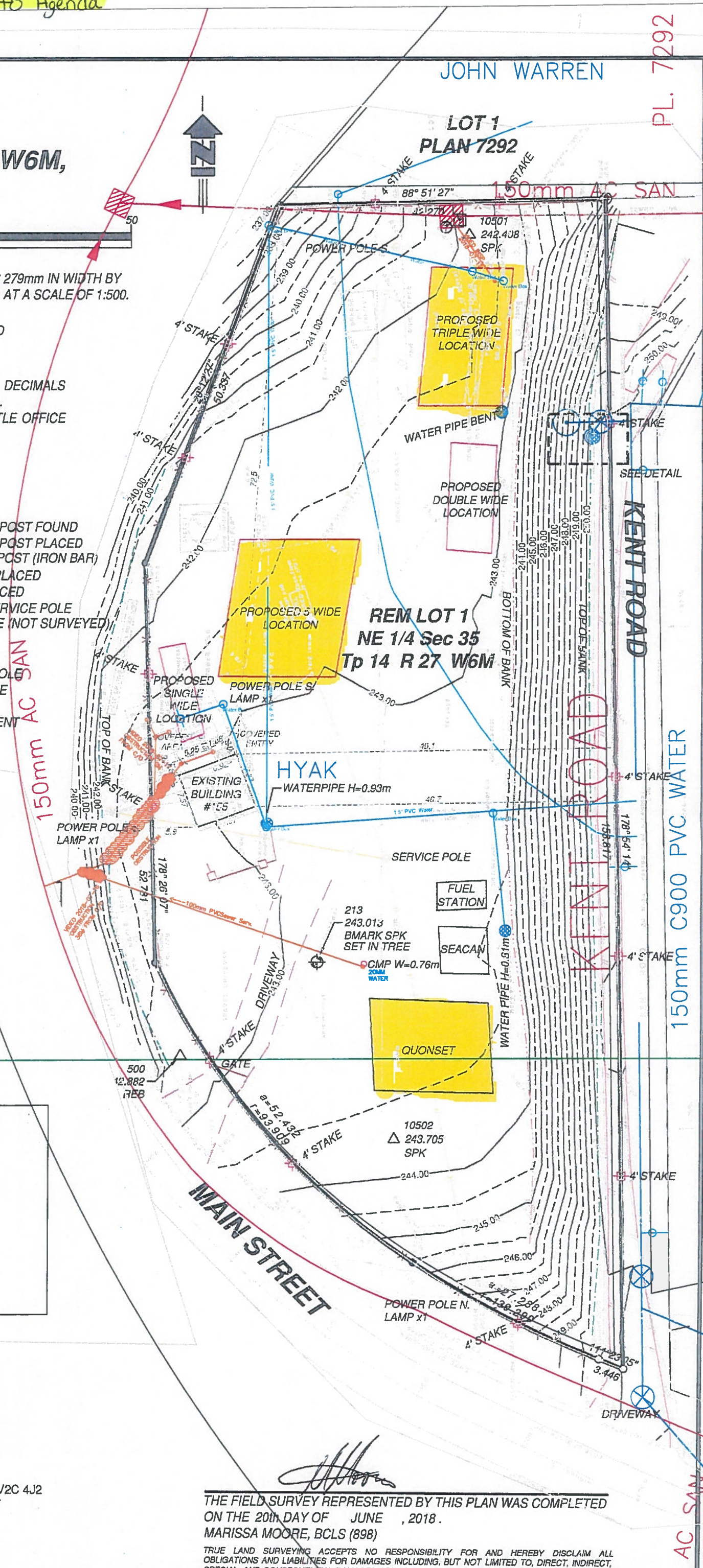


ALL DISTANCES ARE IN METERS
1:500
THE INTENDED PLOT SIZE OF THIS PLAN IS 279mm IN WIDTH BY 432mm IN HEIGHT (B SIZE) WHEN PLOTTED AT A SCALE OF 1:500.
ELEVATIONS ARE IN METRIC, BASED ON GEODETIC DATUM (CGVD28), AND DERIVED FROM BASE REBAR #500 (ELEVATION = 242.882m).

ALL DISTANCES ARE IN METERS AND DECIMALS THEREOF UNLESS OTHERWISE INDICATED. DISTANCES ARE DERIVED FROM LAND TITLE OFFICE RECORDS (PLAN EPP83488).

LEGEND

- ...STANDARD IRON POST FOUND
- ...STANDARD IRON POST PLACED
- ⊙ ...NON-STANDARD POST (IRON BAR)
- △ ...TRAVERSE HUB PLACED
- ⊕ ...BENCHMARK PLACED
- ⊙ ...POWER POLE/ SERVICE POLE APPROX. O/H LINE (NOT SURVEYED)
- ⊙ ...WATER VALVE
- ⊙ ...FIRE HYDRANT
- ⊙ ...UNKNOWN MANHOLE
- ⊙ ...CHAIN LINK FENCE
- ⊙ ...WOOD FENCE
- ⊙ ...EDGE OF PAVEMENT



OVERLAYS BY MUNDALL ENGINEERING FOR VILLAGE OF LYTTON 2018-07-17:

- MIN. FORESTS 1974 "LYTTON ASST. RANGER STA." (GREY SHADE)
- VILL. LYTTON COMP. BASE MAP 2018
- TRUE LAND SURVEYING 2018



201 - 2079 Falcon Road ■ Kamloops BC ■ V2C 4J2
 tel 250.828.0881 ■ fax 250.828.0717
 info-kam@TRUE.bc.ca
 DRAWN BY: KR
 DWG FILE: 1472-011 SP
 JOB NO: 1472-011
 FB: 12 ■ P: 62-70

[Signature]
 THE FIELD SURVEY REPRESENTED BY THIS PLAN WAS COMPLETED ON THE 20th DAY OF JUNE, 2018.
 MARISSA MOORE, BCLS (898)
 TRUE LAND SURVEYING ACCEPTS NO RESPONSIBILITY FOR AND HEREBY DISCLAIMS ALL OBLIGATIONS AND LIABILITIES FOR DAMAGES INCLUDING, BUT NOT LIMITED TO, DIRECT, INDIRECT, SPECIAL, AND CONSEQUENTIAL DAMAGES ARISING OUT OF OR IN CONNECTION WITH ANY DIRECT OR INDIRECT USE OR RELIANCE UPON THE PLAN BEYOND ITS INTENDED USE.

150mm AC SAN